

iGrafx® FlowCharter™ Product Comparison

Use this worksheet to compare the extensive capabilities of iGrafx with another process mapping product (the “Challenger” tool). Talk to your iGrafx account manager if you have additional questions about iGrafx or the product you’re comparing.

Key Issue Comparison (what to look for in a process mapping tool)

Swimlane (process functional role) modeling. Are swimlanes intelligent (e.g. grow and shrink as shapes are added to them) or dumb (e.g. no repeating headers on multi-page diagrams)?

Large diagram capabilities. Are automatic off-page connectors available? Can the tool create a hierarchical process within a single file? Is it easy to convert a multi-page diagram to a single page for printing to a plotter?

Editing functions. Do lines drawn from decision shapes automatically include “Yes” / ”No” path text? Do connection lines heal themselves when shapes are removed from the connectivity?

Cause & Effect diagramming. How easily can Cause & Effect diagrams be created? Is there a tool that automatically links modeling data, fishbone diagram and Pareto Chart together? When lines are lengthened on a fishbone diagram, do other lines retain their original angle to the spine of the diagram?

Process modeling. Is information about activity duration times, resource allocations, schedules, transaction rates, etc. included in the process map?

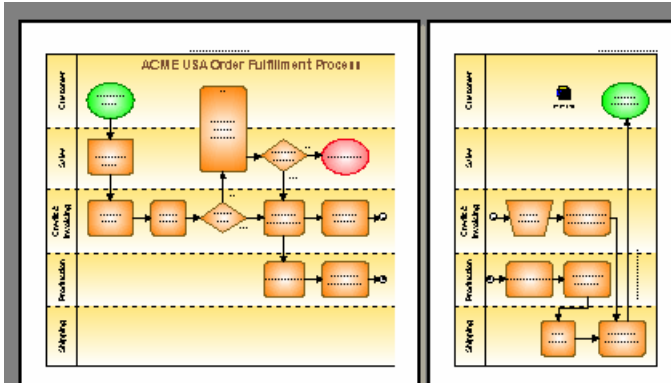
Publishing. Can multi-page diagrams be published in paginated format to Web, Microsoft® Word or PowerPoint® with a single command? Are there tools for publishing multiple files at once?

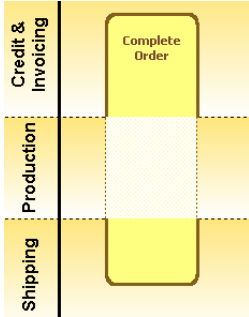
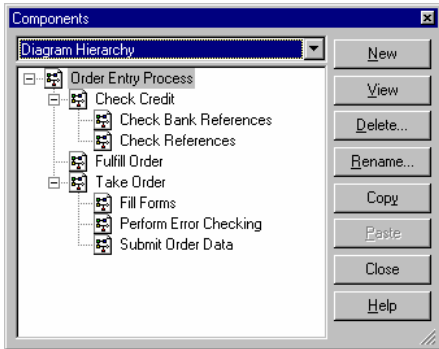
Process analysis and simulation. Are process maps ready for process improvement and optimization using “what-if?” analysis and simulation?

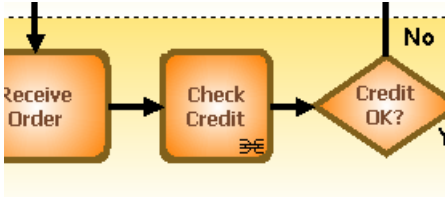
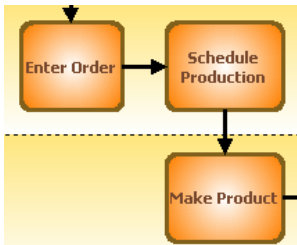
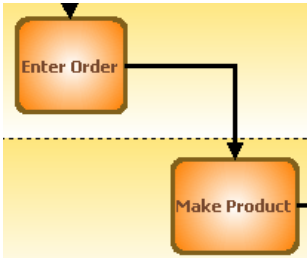
Repository support. Does the tool operate in a collaborative, client / server environment with versioning, audit trail, link management, web viewing and access control features?

Process Mapping Comparison

Question	iGrafx Response	Questions for Challenger
Can swimlanes be defined which grow and shrink automatically as shapes are inserted?	Yes. Swimlanes adjust when adding or deleting shapes.	Create a page with 5 lanes. Add a new page with the same lanes. Adjust the size of a lane. Is the corresponding swimlane on the other page adjusted also?
Can swimlanes be added easily to the middle of a process map?	Yes. Select an existing swimlane, click the swimlane icon, then enter the name of the new swimlane.	What happens if adding a swimlane pushes other swimlanes beyond the page boundary? Do they move to the next page?
Do swimlane headers repeat on all pages when printing?	Yes. In addition, headers repeat when exporting to Web or Microsoft Office applications. The iGrafx Print Preview figure shows headers repeating automatically.	Create a multi-page diagram with swimlanes. Change the header of a swimlane and see if the change is shown on the other page.



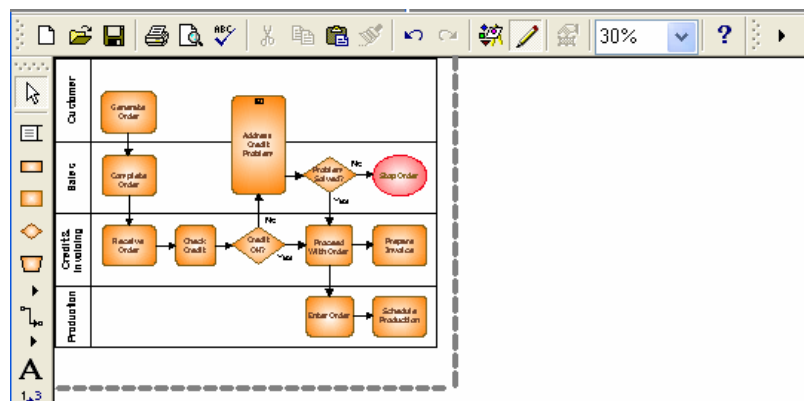
Question	iGrafx Response	Questions for Challenger
<p>Can shapes representing activities span multiple swimlanes?</p>	<p>Yes. Hold the CTRL key down while growing a shape. Cross-functional activities can also be simulated. The iGrafx figure below shows an activity performed by two departments only (not the Production department).</p> 	<p>Create a shape that spans multiple departments. How do you represent departments not involved in the activity?</p>
<p>Can a process hierarchy be created in a single file?</p>	<p>Yes. iGrafx allows an unlimited number of process maps within a single file. The File > Components explorer displays and manages the hierarchy.</p> 	<p>How do you create a file with multiple diagrams that each span more than one page. Can the tool define a process hierarchy?</p>

Question	iGrafx Response	Questions for Challenger
<p>Do link indicators appear automatically on all shapes linked to sub-processes or supporting documents?</p>	<p>Yes. In iGrafx, the standard link indicator symbol is a shaded shape, but other link indicators are available. For example, the “chain” symbol shown here:</p> 	
<p>Is automatic shape numbering available?</p>	<p>Yes. Shape numbers reside in a secure “field” on each shape. Because the numbers are located separately from the shape text, they are easier to read and modify.</p> <p>By using a numbering “field”, editing the shape text can’t affect the shape number adversely.</p> <p>iGrafx also supports hierarchical shape numbering. When the number of a parent shape changes, all shapes in a linked subprocess are automatically renumbered appropriately.</p>	<p>Are shape numbers separate from the shape text?</p> <p>Can all shape numbers be easily turned on and off as desired?</p> <p>Does changing a shape number have any affect on a linked diagram?</p>
<p>Can shapes be removed from the connectivity (“auto-healed”) without deleting neighboring connection lines?</p>	<p>Yes. iGrafx provides an “auto-healing” feature. This feature reduces the time required to build process maps.</p> <p>Before delete:</p>  <p>After Delete:</p> 	<p>Add three connected shapes and delete the middle one. What happens?</p>

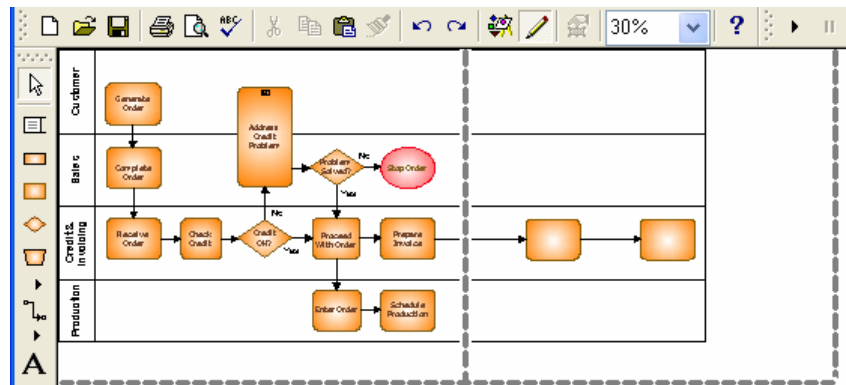
Question	iGrafx Response	Questions for Challenger
----------	-----------------	--------------------------

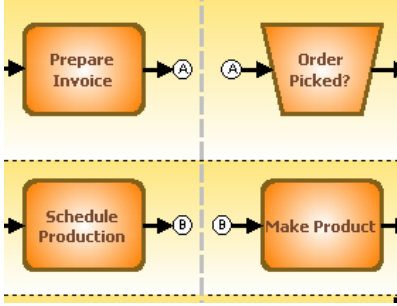
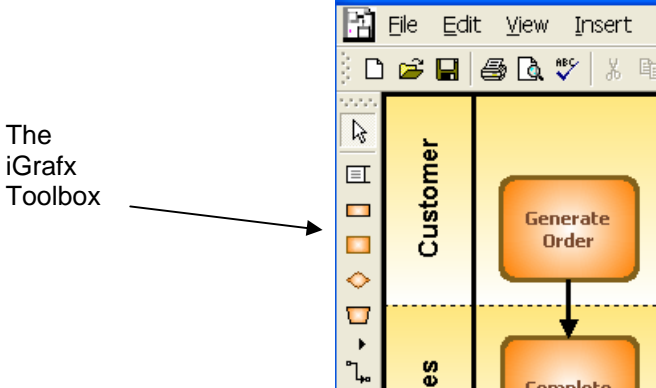
Are **new pages** added automatically as necessary?

Yes.
New pages are added automatically as shapes are dropped outside of existing page boundaries. The gray dashed line shows the original page boundary:



Adding additional shapes outside of page one creates a new page:

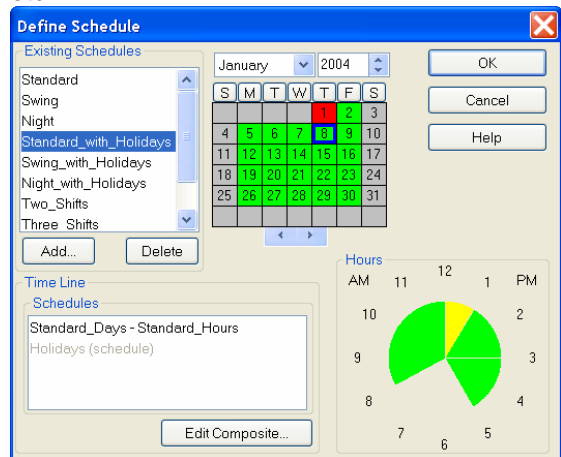


Question	iGrafx Response	Questions for Challenger
<p>Are automatic off-page connectors available?</p>	<p>Yes. Use the Off-page Connectors tab of the Format > Diagram dialog. This feature makes it easier to follow the flow of multi-page diagrams. If the Page Setup is changed to print to a single, large plotter page, the off-page connectors hide automatically.</p> 	<p>If manual connectors must be used, how many steps are required to insert them?</p> <p>How do you convert a multi-page diagram to print as a single page to a plotter?</p> <p>If the page size grows or shrinks, do off-page connectors automatically removed or created?</p>
<p>Is there a Toolbox Toolbar?</p>	<p>Yes. Frequently used shapes are available from the frame border. This makes common shapes easier to find and reduces the area taken by the user interface. Pre-defined templates can pre-set the shapes available.</p> 	

Question	iGrafx Response	Questions for Challenger
----------	-----------------	--------------------------

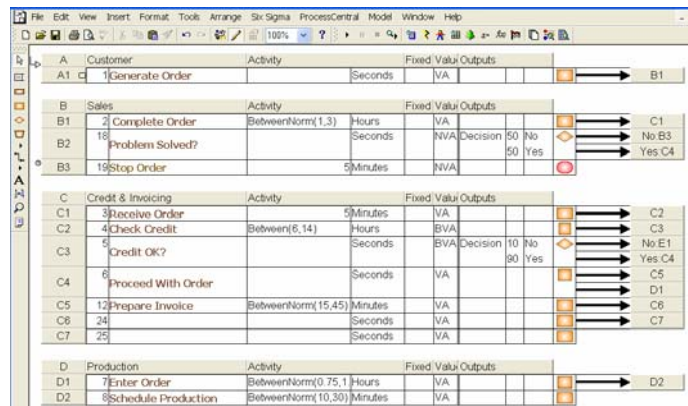
Can **business process information** (e.g. schedules, resource allocation levels) be part of the file?

Yes.
iGrafx processes are more than just diagrams – they are process models that can later be simulated and analyzed providing business process improvement. Within each document, multiple scenarios are definable for resource allocations, work schedules (see below), transaction rates, costs, etc.

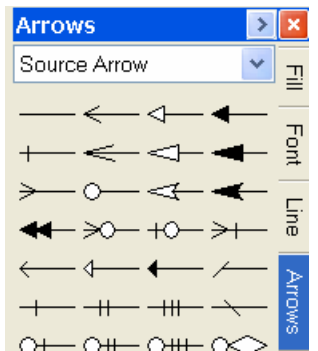
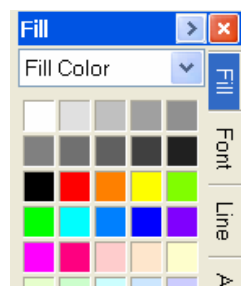
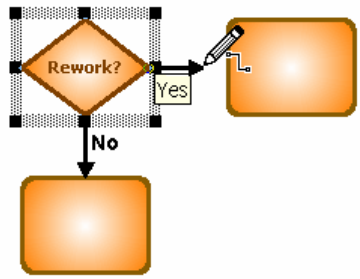


Is there a **Tabular View** for easy viewing of business process information?

Yes.
Process data is displayed and edited in both graphical and tabular formats.

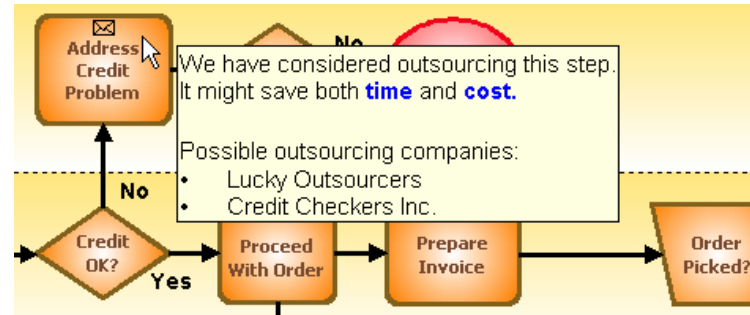


<p>Is there an Autosensing feature where multiple shapes can be easily added and edited in a single mode – without drag and drop?</p>	<p>Yes. Users add shapes, resize and move items, label objects and draw connecting lines with the default iGrafx editing mode.</p>	
<p>Are decision shapes intelligent (e.g. lines drawn from them automatically include “no” and “yes” text)?</p>	<p>Yes. By default, iGrafx decision shapes automatically include connection line text. The default “yes” / “no” routing text can be changed if desired.</p>	
<p>Can Connection Lines be added to any point on the face of a shape?</p>	<p>Yes.</p>	<p>How many steps are required to add additional connection points to a shape?</p>
<p>Is there a format gallery?</p>	<p>Yes. The Gallery provides quick access to frequently used formatting controls including Fill, Font, Line, Arrows, and Shadow/3D.</p>	



Can “Notes” be added to shapes so that they “pop-up” when the cursor is dragged over the shape?

Yes.
To add notes, use the View > Note command with a shape selected.
Display notes by moving the cursor over any shape with a Note indicator.



The Challenger tool may allow “comments” but comments are inferior to Notes:

- Comments are **always** marked with a person’s name.
- Comments can’t be formatted.
- Comments don’t appear when published to Web.

Compare features for defining Cause & Effect diagrams.

The iGrafx Cause & Effect diagram type initializes the workspace with a default fishbone diagram, statistical worksheet, optional FMEA sheet, and Pareto chart.

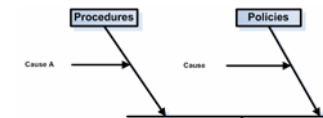
These elements are linked together. For example, if a value in a worksheet is changed then the associated fishbone diagram and Pareto chart are updated automatically.

Six Sigma and quality professionals require an effective Cause & Effect tool.

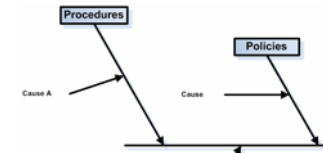
Does the Challenger tool automatically link model data, FMEA, fishbone diagram and Pareto Chart together?

When lines are lengthened on a fishbone diagram, do the secondary causes lose their horizontal orientation like below:

Before adjusting main cause:

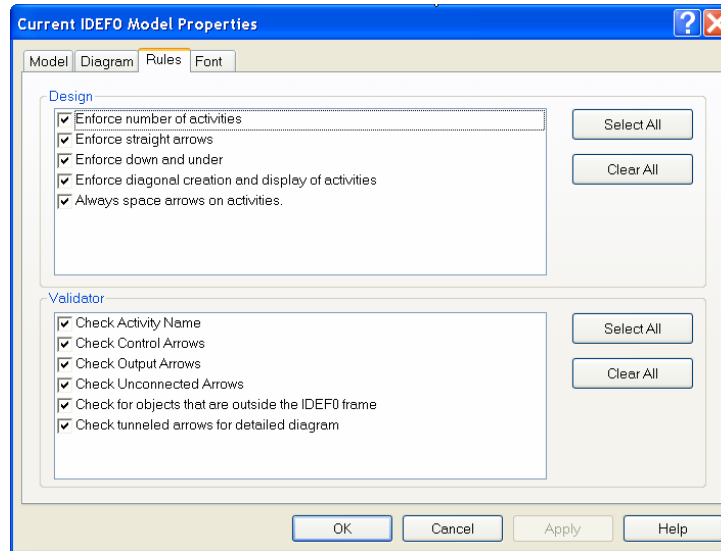


After:



Can **IDEFO** models be created and **verified** compliant to the specification?

Yes.
The iGrafx IDEF0® add-on (purchased separately) includes “correct-by-construction” and “rules-checking” capabilities to ensure that IDEF0 models meet all requirements of the IDEF0 specification.



Can multiple models and supporting documents be **web published** with a single command?

Yes.
For example, publish a directory of 25 iGrafx and Microsoft Office documents, modify three of the files, republish and iGrafx automatically updates only the three web documents whose source iGrafx files have changed.

Use a convenient tree control to customize the publish list. The published files also have a tree control for navigating between files.

In addition, iGrafx links between documents become valid URL links after publishing to Web format.

Create a diagram with a link to a Word document.

Can both the diagram and Word document be published to Web with a single command?

Can diagrams be exported to Microsoft Word and PowerPoint in paginated format?	Yes. Use the File > Publish As command. Multi-page iGrafx process maps are published to separate pages. This is an important feature when publishing large process maps.
Can diagrams be immediately used for process analysis and simulation ?	Yes. iGrafx Process™ and iGrafx Process for Six Sigma simulates and analyzes any iGrafx process map (including iGrafx FlowCharter files). Go beyond simply documenting your existing processes. Analyze and optimize them to improve your business and enhance customer satisfaction.
Does the vendor provide a central repository tool that is integrated with the process mapping tool?	Yes. iGrafx Process Central® is a team-based collaborative application that delivers version control, link management, document security, audit trail, query, and automatic web publishing capabilities.

iGrafx, Corel, iGrafx IDEF0, iGrafx FlowCharter, iGrafx Process, and Process Central are registered trademarks or trademarks of Corel, Inc. Microsoft and PowerPoint are registered trademarks of Microsoft Corporation. All other products are trademarks of their respective holders. All product specifications or features are subject to change without notice.